



- \* Sports goods.
- \* Advertising, flags, banners, accessories.
- \* Large photos, posters.

- \* Transfer on Hard Substrate (ceramic, aluminium, plastic, wood...)
- \* Textile : home finishing, apparel, curtains...
- \* Awning

- Ideal for sublimation with good productivity and flexibility.
- Fast startup ! (15 to 20min)
- Plate in rectified high quality aluminium
- Perfect heat distribution
- PT100 platinum heat sensor
- 2-year guarantee on the machine.
- 10-year guarantee on heating elements
- Manufactured in France.



Set programs



Pneumatic



Fast heat up

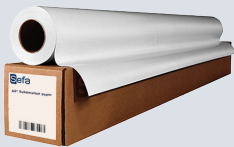


Pre-heat time



Touch Screen

## OPTIONAL ACCESSORIES



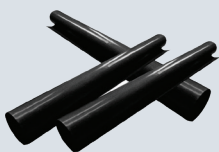
Sublimation paper



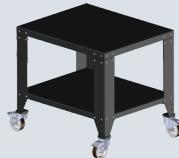
Polyester Felt



Nomex® Cover



Teflon Cover



Support Table with or without castors



Compressor

Email

sales@sefa.fr  
support@sefa.fr  
www.sefa.fr



Phone

Office : + 33 4 68 74 05 89  
Fax : + 33 4 68 74 24 08



Address

SEFA SAS  
Z.I. PASTABRAC  
11 260 ESPERAZA (FR)



TRANSFER YOUR IMAGINATION

## TECHNICAL CHARACTERISTICS

Type Operation	Pneumatic SLIDE - Tray with drawer
Platen size	SLIDE865 : 850x650 mm SLIDE1285 : 1250x850 mm
Weight	SLIDE865 : 261 Kg / 575 lbs SLIDE1285 : 419 Kg / 924 lbs
Max thickness	45 mm
°C / °F Max	220 °C / 429 °F
Power	SLIDE865 : 6000 W SLIDE1285 : 12000 w
Power supply	SLIDE865 : 240V Single phase SLIDE1285 : 400 V 3-phases
Amperage	SLIDE865 : 28 A SLIDE1285 : 18 A
Applications	ChromaLuxe, Sublimation Rigid Substrate, Textile Sublimation

## SETTINGS

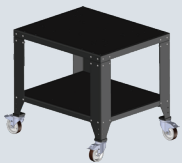


Touch electronics developed by Sefa  
Precise and fast regulation (PID control)  
4 recordable programs  
Counter with reset  
Double timer  
Energy saving

From 0 to 570 sec (precision +/- 1%).  
From 0 to 220°C (precision +/- 1%).

Heating time to reach 180°C : 10 min.

## OPTIONAL ACCESSORIES



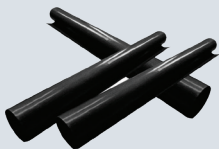
**TAB-98 / R**  
Support table. With or without castors.



**COMP-111**  
Silent compressor 42dB(a)  
50L. 111Lt/min.



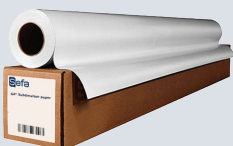
**FEU-P865 / FEU-P1285**  
Polyester felt for lower plate.



**TOI-T865 / TOI-T1285**  
Teflon cover for heating plate.



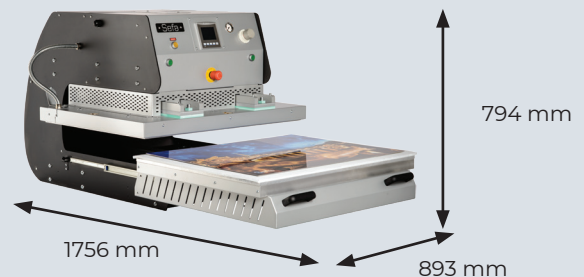
**TOI-N865/TOI-N1285**  
Nomex® cover for heating plate.



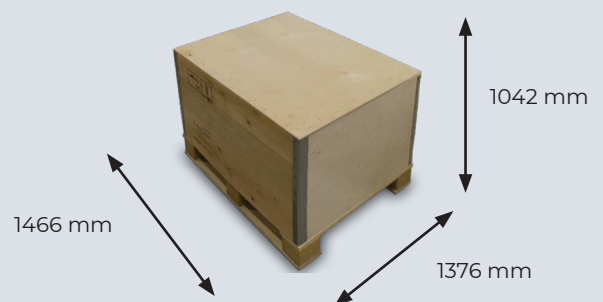
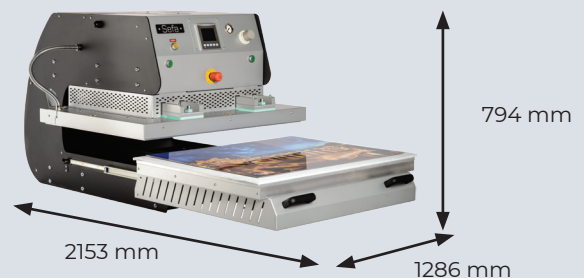
**SE64300 / SE44100**  
High quality sublimation paper available in 44"x30m and 64"x100m.

## DIMENSIONS

### SLIDE 865



### SLIDE 1285



Box weight CAI-SLIDE : 75 kg